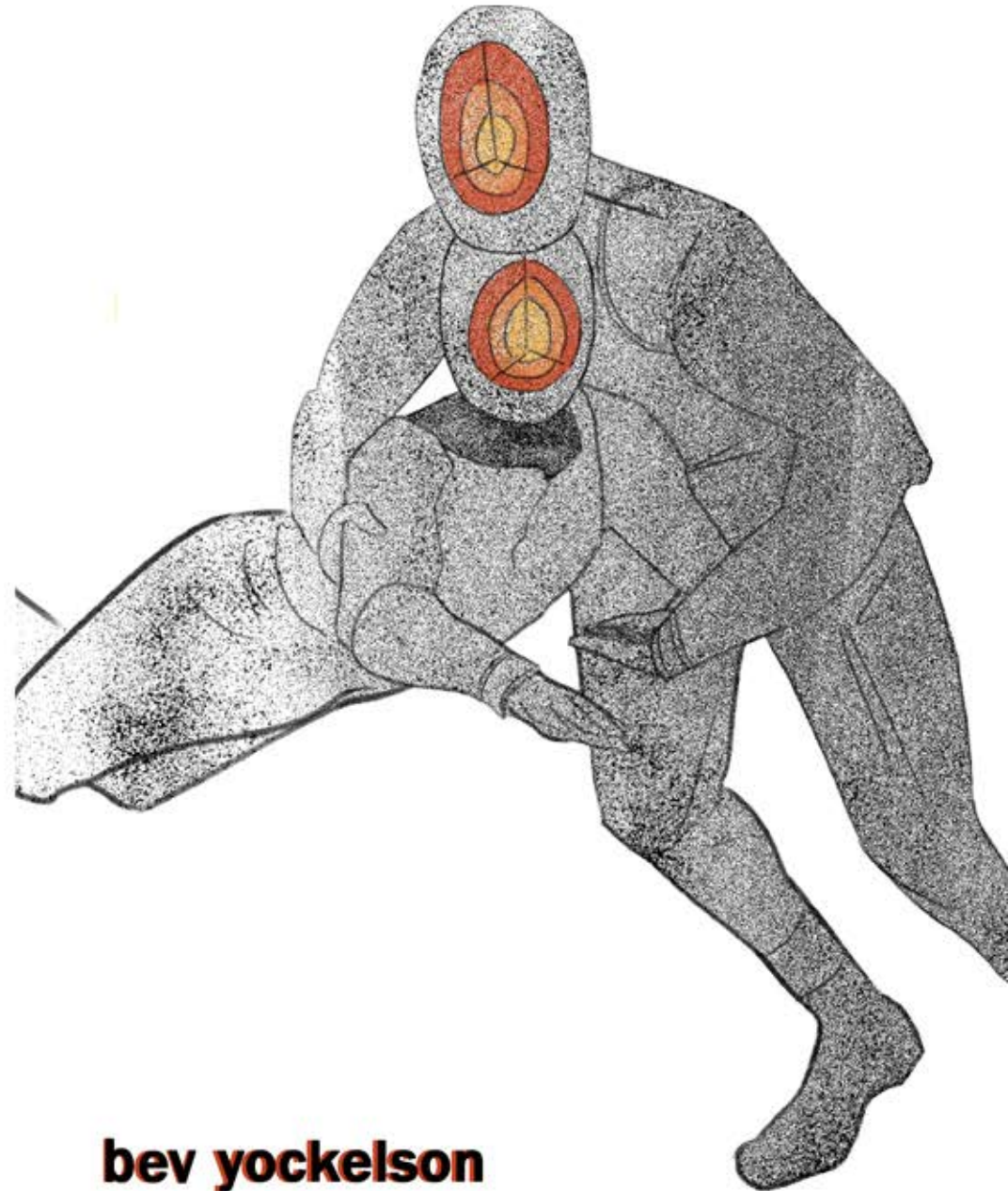


# **anatomy of an alien planet**



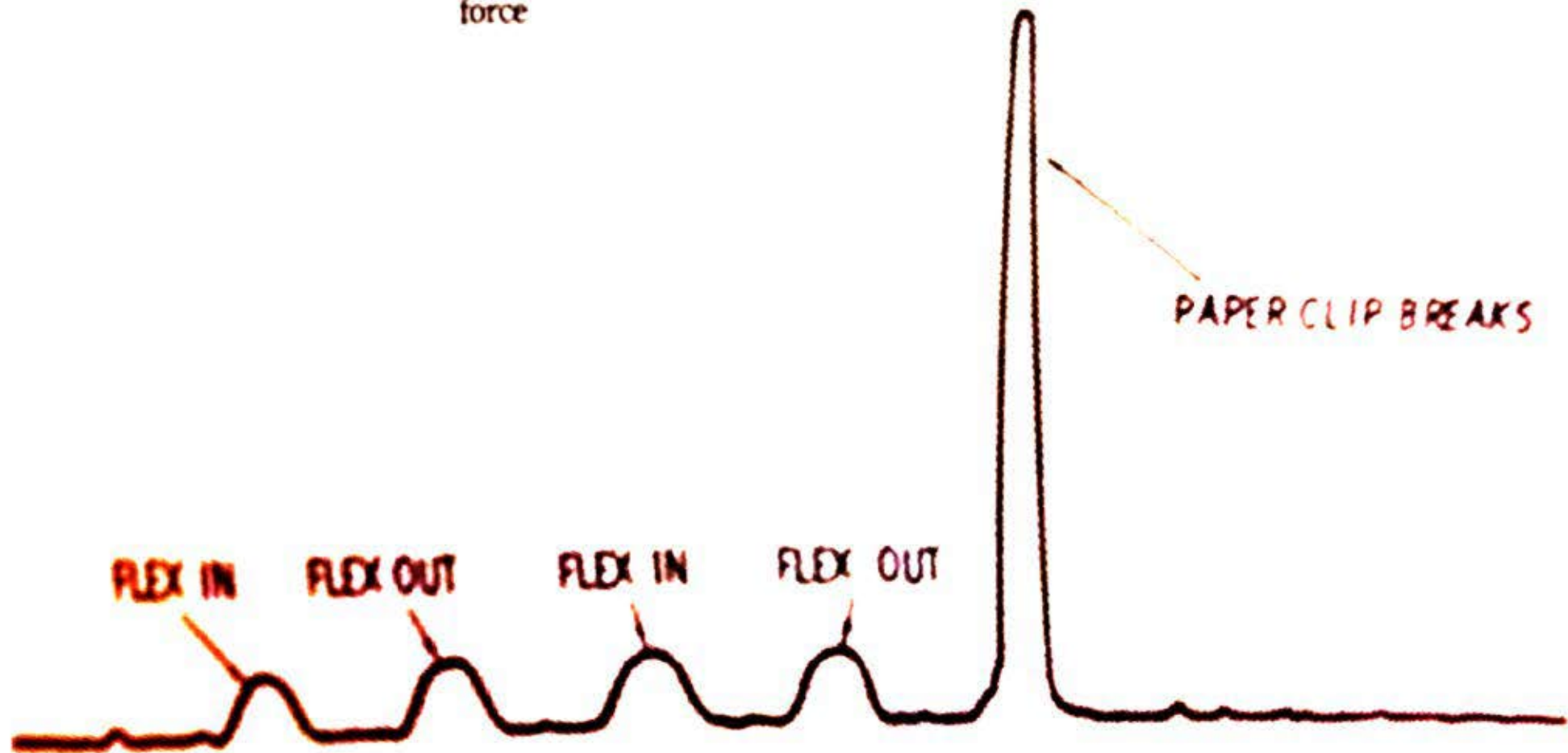
**bev yockelson**



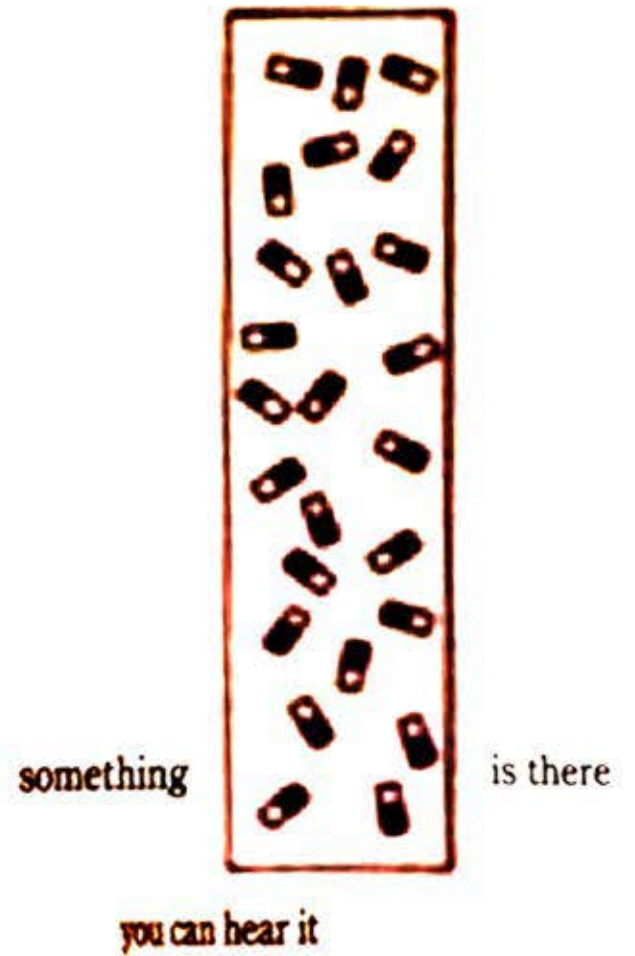
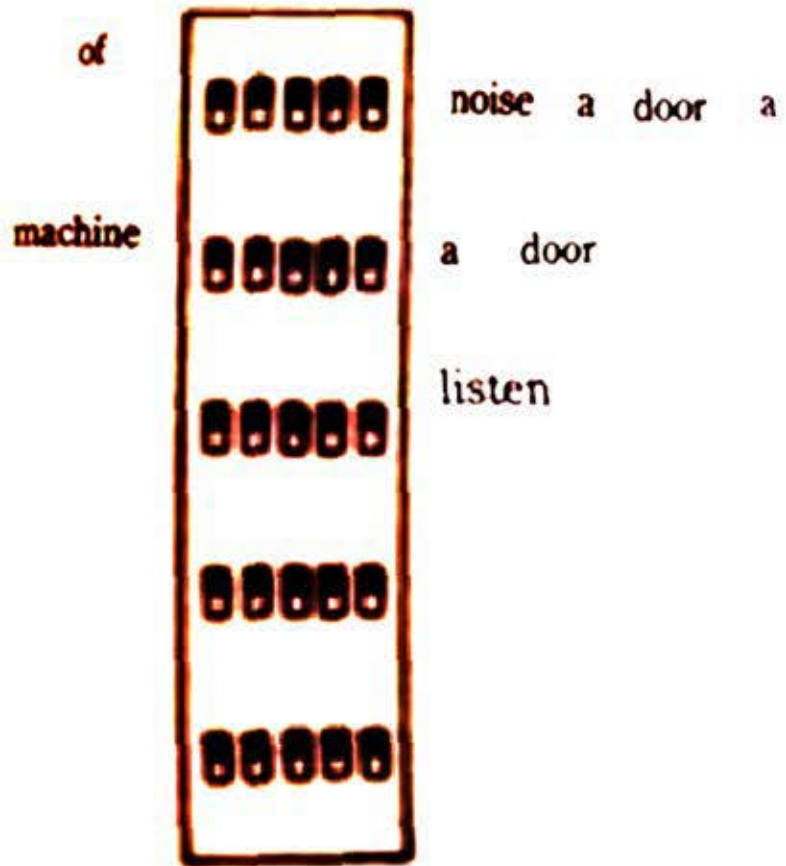
listen

**This** requires  
a given degree of  
soft

force

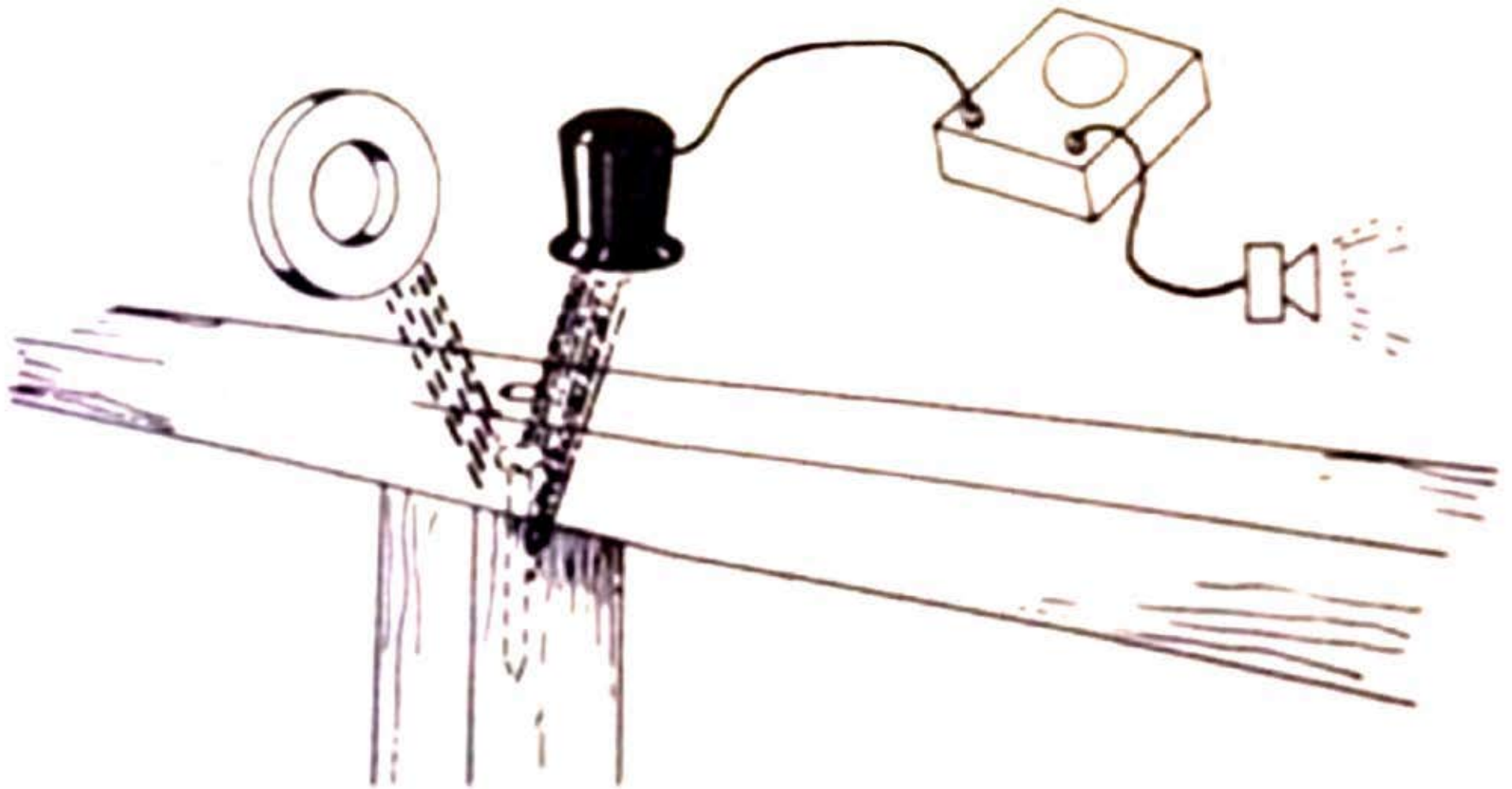


Some objects will produce a large amount



some of us

are completely aligned



The signal is sufficient.

a sensor can be placed in a field.

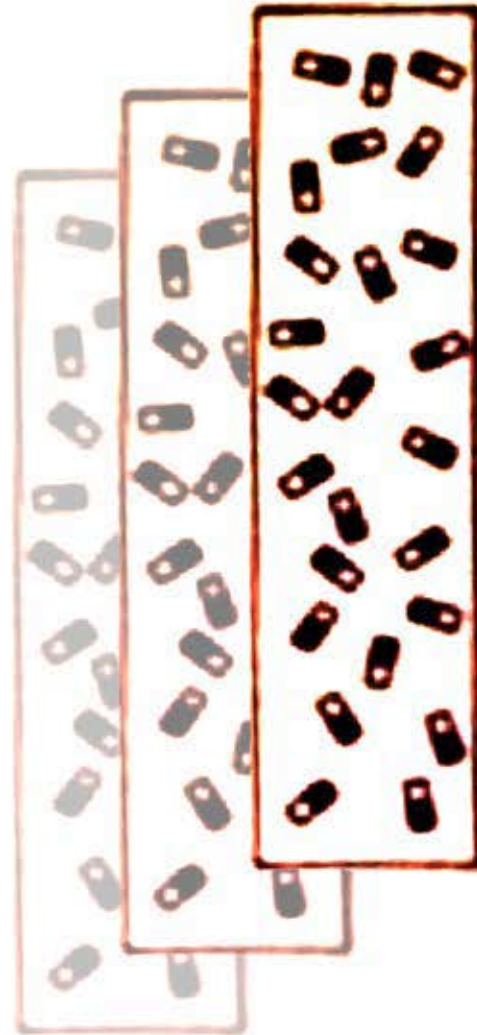


you  
still exhibit the properties of  
iron

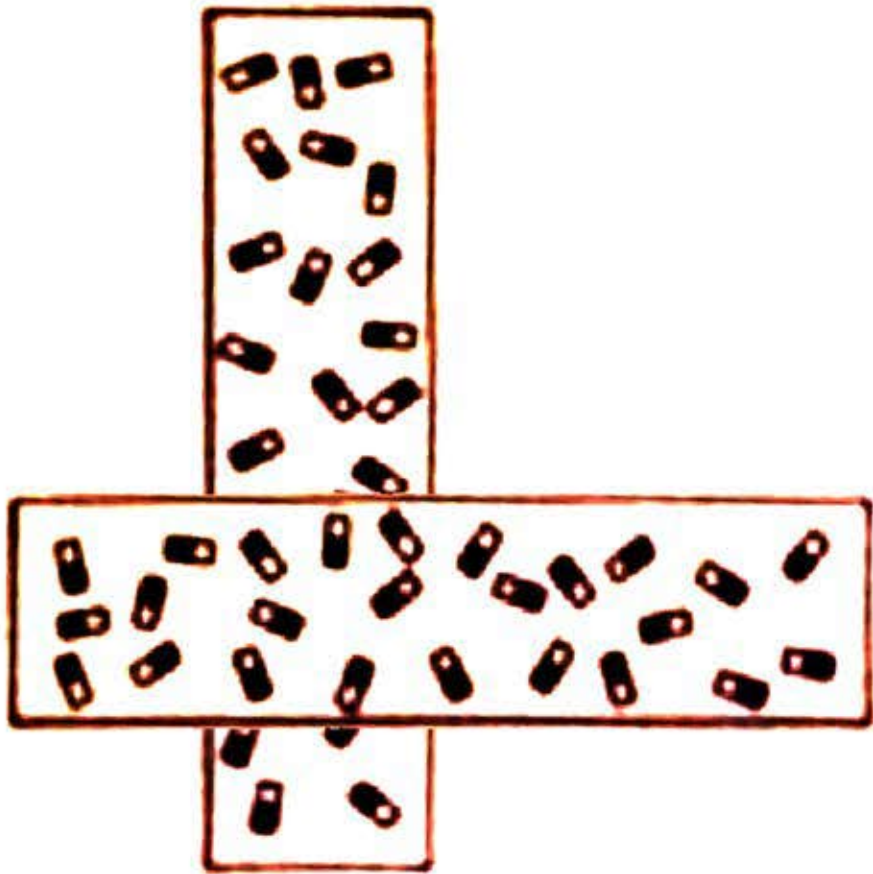


you can  
act as a  
magnet

If we were to continue  
we would soon



fragment

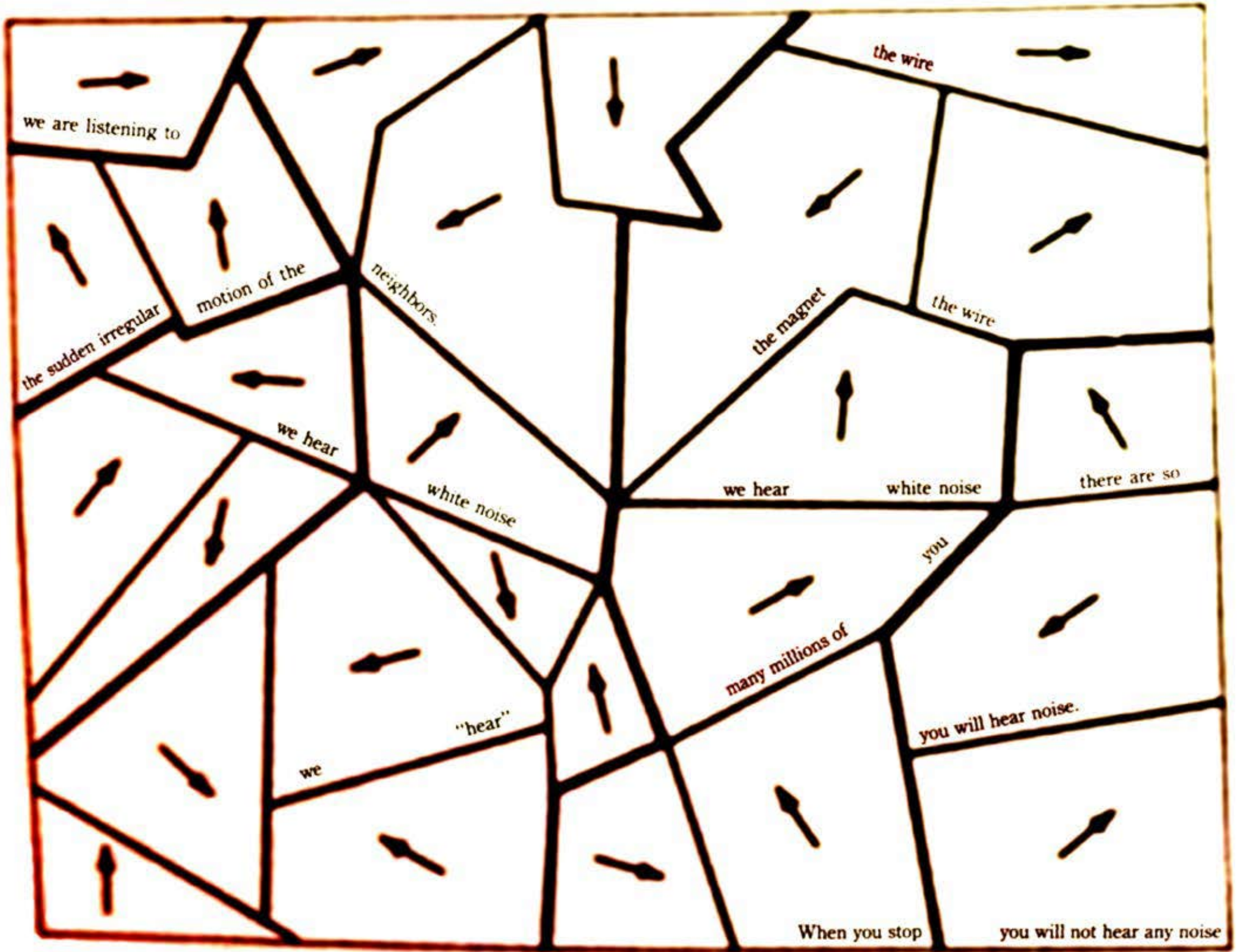


listen





listening to white noise



we are listening to

the wire

the sudden irregular

motion of the

neighbors.

the magnet

the wire

we hear

white noise

we hear

white noise

there are so

you

many millions of

you will hear noise.

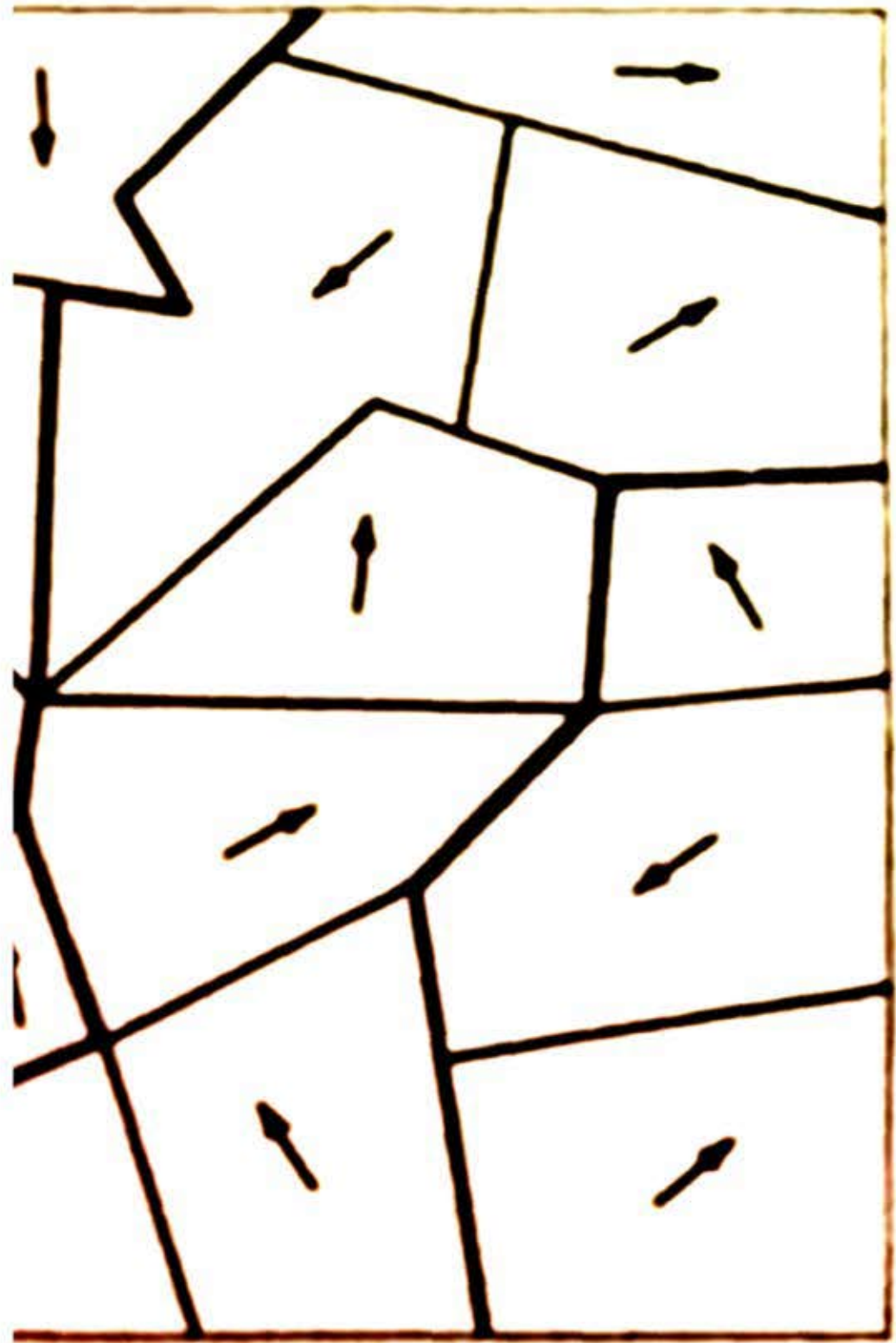
we

"hear"

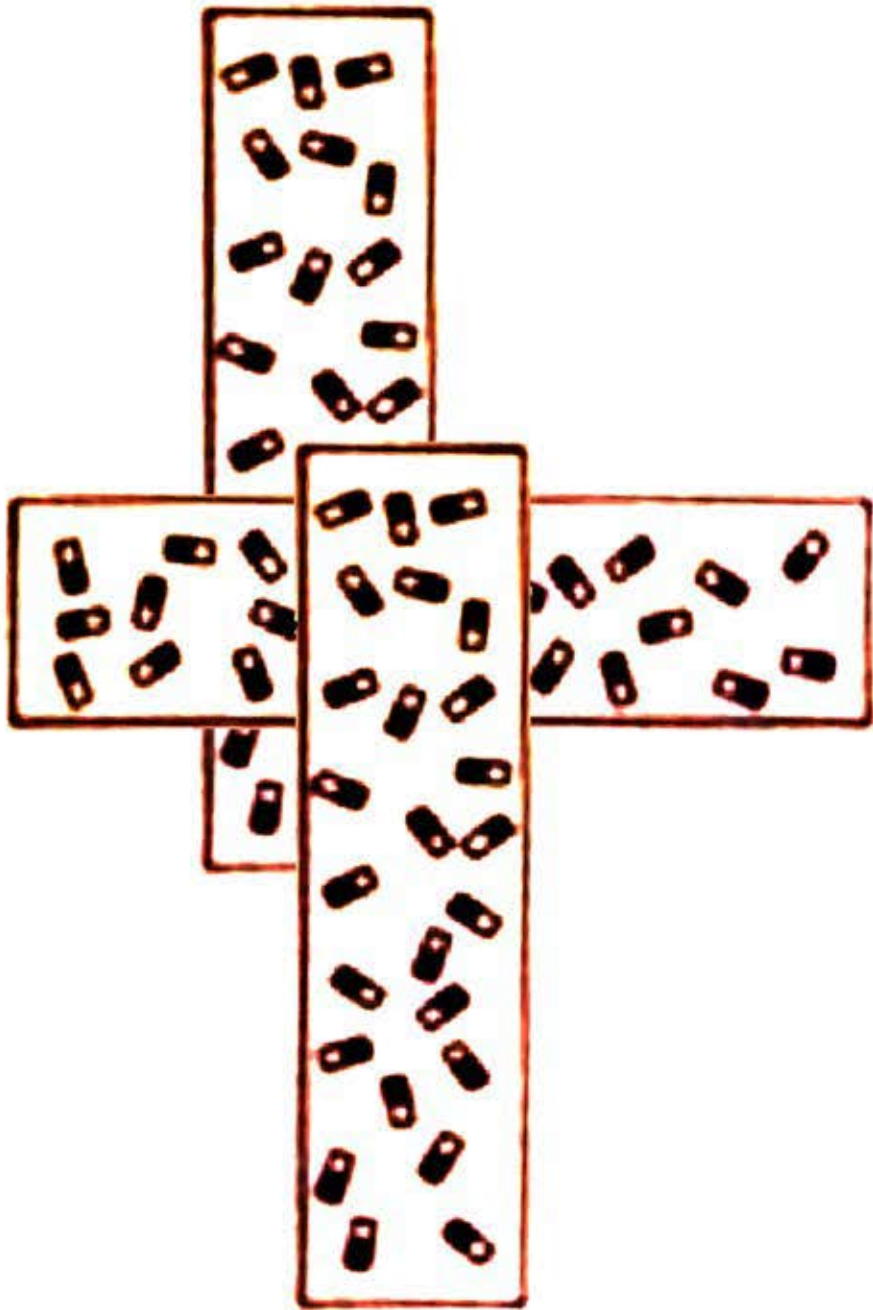
When you stop

you will not hear any noise

listening to the future

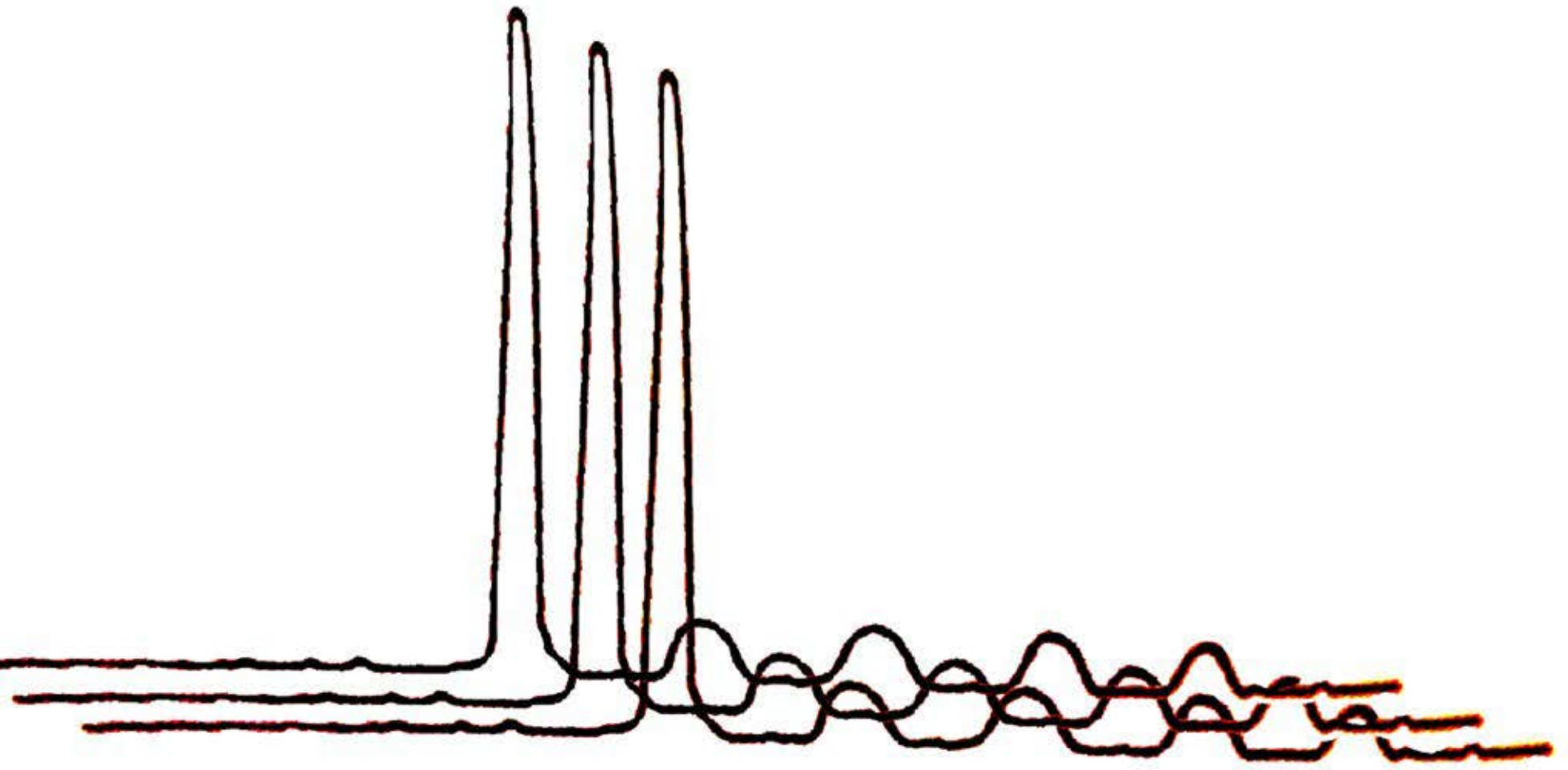






listen

define the boundaries



The noise we are listening to is the result

of a single

shifting

touch



we point to

each other

we were as soft as needles

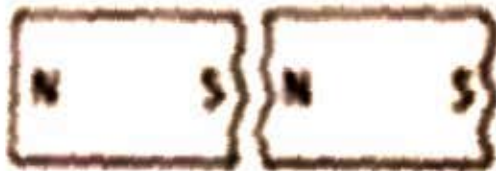
as small as molecules

look at  
you



you can break

We can



we arrive in a field

break

This action exists

